

# UBL6H



Light Efficiency:

43 Lumen/Watt

Light Quality:

CRI: 89.9

Color Temperature:

6513 K

Output: 1153 lm

Peak: 12419 cd

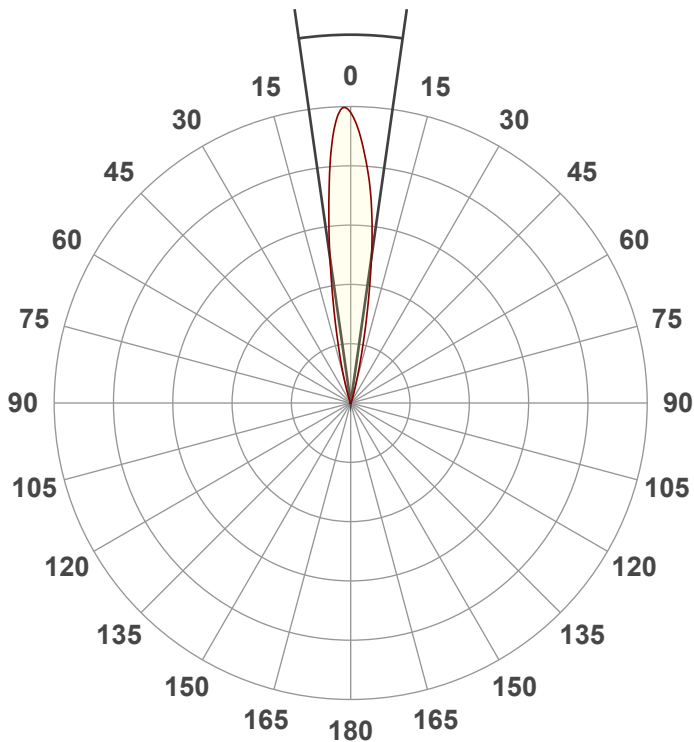
Power: 26.5 W

PF: 0.55



Beam Angle

16.2°



Test:

6500K

Date:

2/1/2024

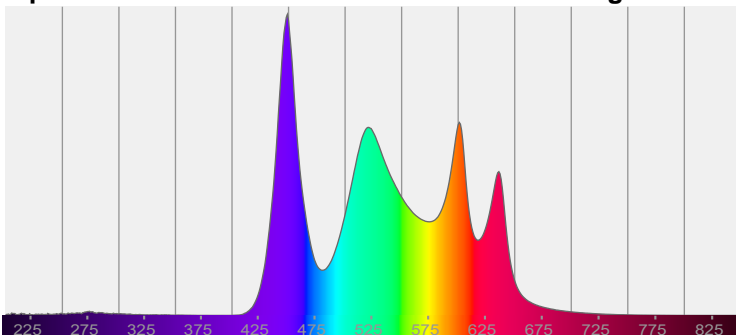
Note:

@ 160

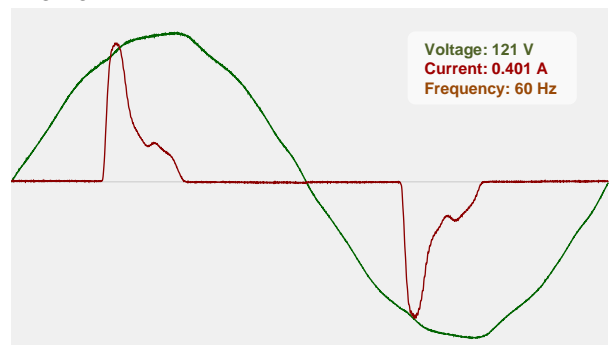
CIE 1931  
x: 0.312  
y: 0.333

Spectra

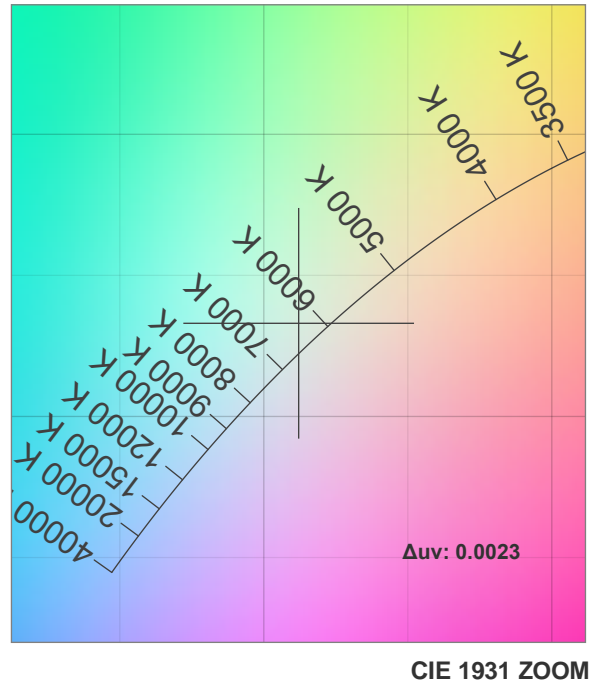
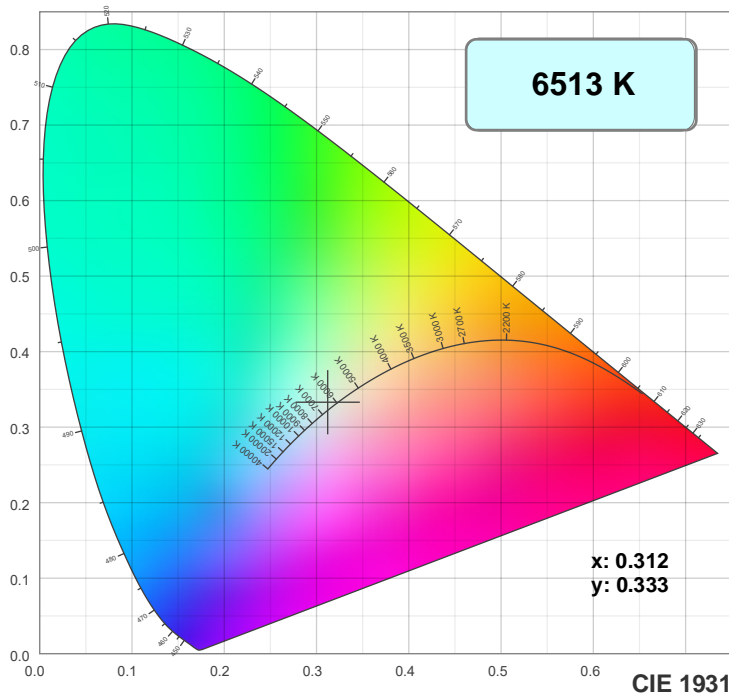
Dominant Wavelength: 543nm



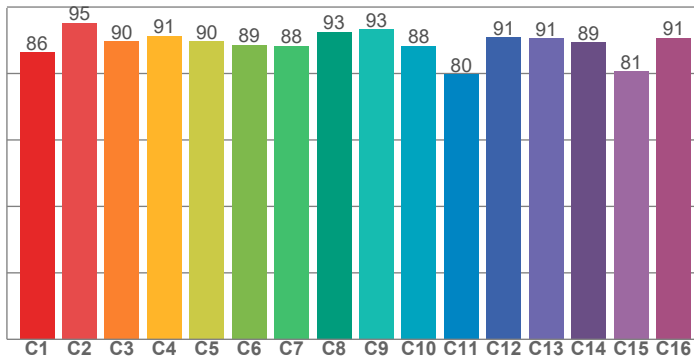
Power



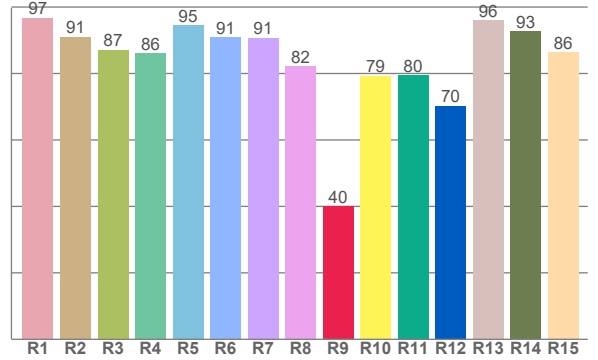
## Color Details



TM30: 88.9



CRI: 89.9 (R1-R8)



CRI R values, only R1-R8 are used to calculate final CRI value

R1	R2	R3	R4	R5	R6	R7	R8	R9	R10	R11	R12	R13	R14	R15
96.7	91.1	87.1	86.1	94.5	90.9	90.7	82.2	40.0	79.3	79.5	70.3	95.9	92.6	86.5

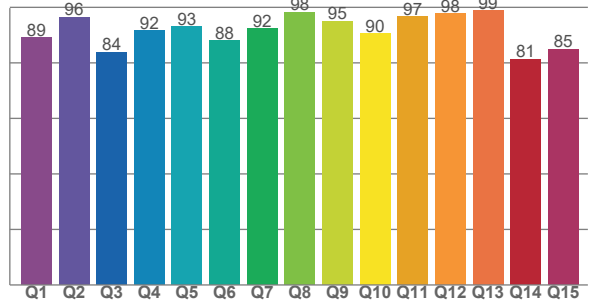
TM30 C values, 16 binned values out of total of 99 C values

C1	C2	C3	C4	C5	C6	C7	C8	C9	C10	C11	C12	C13	C14	C15	C16
86.3	95.2	89.6	91.3	89.6	88.6	88.3	92.6	93.3	88.3	79.7	90.8	90.6	89.4	80.7	90.8

CQS Q values

Q1	Q2	Q3	Q4	Q5	Q6	Q7	Q8	Q9	Q10	Q11	Q12	Q13	Q14	Q15
89.0	96.4	83.8	91.5	93.0	87.9	92.3	98.2	95.0	90.4	96.6	97.8	98.8	81.3	85.0

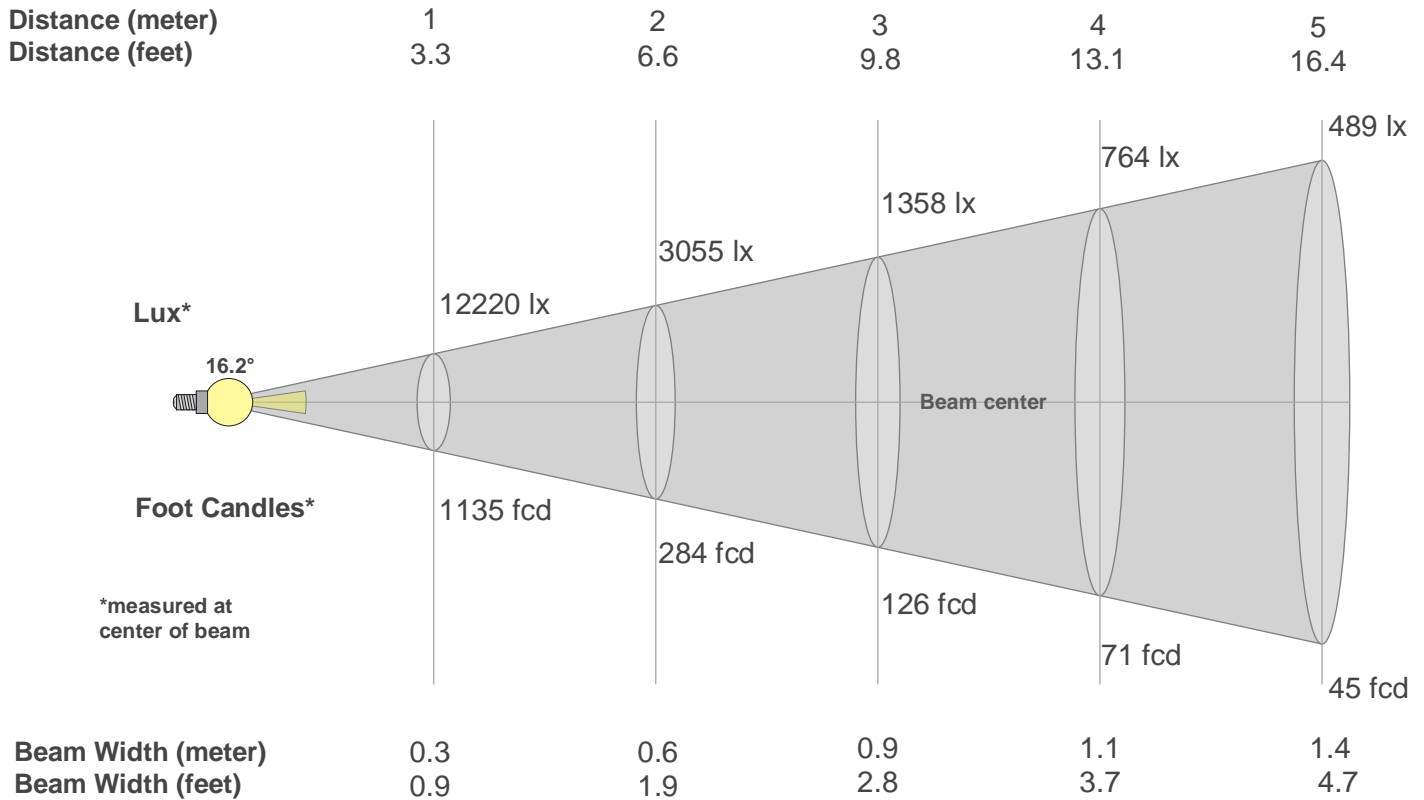
CQS: 90.2



## Color Parameters

Color Temperature	Color Rendering Index	Red Component	Color Fidelity	Color Gamut	Color Quality Scale	Color Coordinate CIE 1931	Color Coordinate CIE 1931	Color Coordinate	Color Coordinate	Color Deviation from Black Body
CCT	CRI	CRI R9	TM30 Rf	TM30 Rg	CQS	x	y	u	v	$\Delta uv$
6513 K	89.9	40.0	88.9	102.6	90.2	0.312	0.333	0.196	0.314	0.0023

## Beam Details



Beam Intensities from 1-20m

m	1	2	3	4	5	6	7	8	9	10	11	12	13	14	15	16	17	18	19	20
ft	3.3	6.6	9.8	13.1	16.4	19.7	23	26.2	29.5	32.8	36.1	39.4	42.7	45.9	49.2	52.5	55.8	59.1	62.3	65.6
lx	12220	3055	1358	764	489	339	249	191	151	122	101	85	72	62	54	48	42	38	34	31
fcd	1135.3	283.8	126.1	71	45.4	31.5	23.2	17.7	14	11.4	9.4	7.9	6.7	5.8	5	4.4	3.9	3.5	3.1	2.8

Intensities in 0° C-plane

0°	1°	2°	3°	4°	5°	6°	7°	8°	9°	10°	11°	12°	13°	14°	15°	16°	17°	18°	19°
12.2K	12.4K	12.3K	11.9K	11.1K	10.0K	8.8K	7.5K	6.3K	5.2K	4.2K	3.3K	2.6K	2.0K	1.5K	1.1K	0.8K	0.6K	0.4K	0.3K
100%	102%	101%	97%	91%	82%	72%	62%	52%	42%	34%	27%	21%	16%	12%	9%	7%	5%	3%	3%

Intensities in 90° C-plane

0°	1°	2°	3°	4°	5°	6°	7°	8°	9°	10°	11°	12°	13°	14°	15°	16°	17°	18°	19°
12.2K	12.4K	12.3K	11.9K	11.1K	10.0K	8.8K	7.5K	6.3K	5.2K	4.2K	3.3K	2.6K	2.0K	1.5K	1.1K	0.8K	0.6K	0.4K	0.3K
100%	102%	101%	97%	91%	82%	72%	62%	52%	42%	34%	27%	21%	16%	12%	9%	7%	5%	3%	3%

Intensities in 180° C-plane

0°	1°	2°	3°	4°	5°	6°	7°	8°	9°	10°	11°	12°	13°	14°	15°	16°	17°	18°	19°
12.2K	11.8K	11.3K	10.6K	9.9K	9.2K	8.4K	7.4K	6.3K	5.2K	4.2K	3.3K	2.5K	1.8K	1.3K	1.0K	0.7K	0.5K	0.4K	0.3K
100%	97%	92%	87%	81%	75%	68%	60%	52%	43%	34%	27%	20%	15%	11%	8%	6%	4%	3%	3%

Intensities in 270° C-plane

0°	1°	2°	3°	4°	5°	6°	7°	8°	9°	10°	11°	12°	13°	14°	15°	16°	17°	18°	19°
12.2K	11.8K	11.3K	10.6K	9.9K	9.2K	8.4K	7.4K	6.3K	5.2K	4.2K	3.3K	2.5K	1.8K	1.3K	1.0K	0.7K	0.5K	0.4K	0.3K
100%	97%	92%	87%	81%	75%	68%	60%	52%	43%	34%	27%	20%	15%	11%	8%	6%	4%	3%	3%

Beam Angle 50%	Field Angle 10%	Cutoff Angle 2,5%	Intensity Ratio in 120° Cone	Intensity Ratio in 90° Cone
16.2°	28.8°	38.6°	100.0%	100.0%